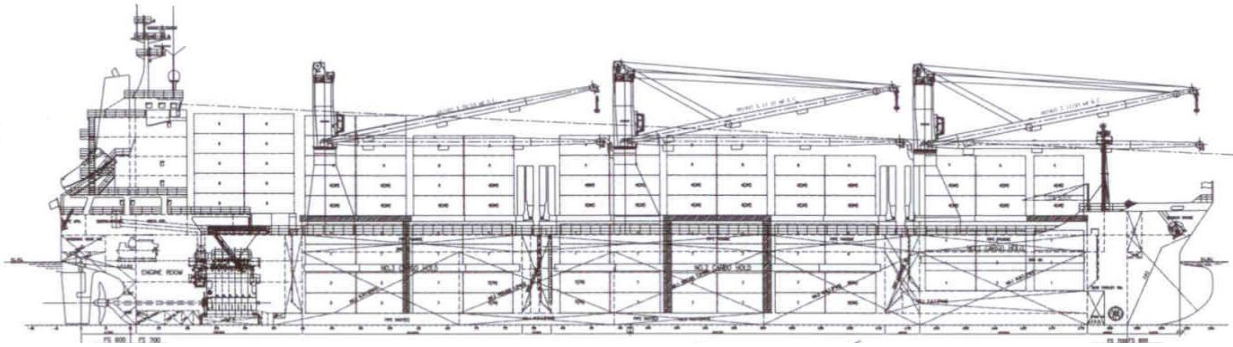


# SAFMARINE ANGELA / ANITA / AKWABA / ANDISA



## all figures about

### General

Delivery dates : December 2007-June 2008  
Basic functions : Transport of bulk, project/general/heavy lift cargo, IMO class cargo, containers, etc.  
Classification : Lloyds Register +100 A1, +LMC, UMS, LI, strengthened for heavy cargo  
Flag register : Basel, Switzerland

### Dimensions

Length o.a. : 139.95 m  
Beam mld. : 21.51 m  
Depth : 11.65 m  
Summer draft : 8.40 m  
Deadweight : 12583 t  
Gross tonnage : 9938

### Capacities

Hold capacities : 16113 m<sup>3</sup>  
Fuel (HFO-380) : 1130 m<sup>3</sup>  
Marine Diesel oil : 140 m<sup>3</sup>  
Fresh water : 180 m<sup>3</sup>  
Ballast water : 4920 m<sup>3</sup>  
Containers in hold : 292 TEU (T/deck hold 1 not in pos)  
Containers on deck : 414 TEU  
Total number : 706 TEU  
Reefer plugs : 138 sockets - 440 V

### Performance

Service speed 16.7 knots at design draft of 8.20 m

### Propulsion System

Main engine : MAN B&W 6S46MC-C stroke  
Output : 7860 kW / 129 rev.  
Propeller : 5 blades, fixed pitch  
Bow thruster : 500 kW, CPP

### Auxiliary Equipment

Generator sets : 3 x 680 kW  
Ballast pump : 2 x 300 m<sup>3</sup>/h  
Freshwater gen. : 15 m<sup>3</sup>/24h  
CO<sub>2</sub> fire fighting system in engine room and cargo holds.

### Holds and Hatches

3 cargo holds : box shaped type; partly of slant construction in hold 1 forw. and 3 aft for bulk cargo  
Tween deck : 1 x Tweendeck in all holds in hold 2 with two heights  
Portable bulkheads : T/D panels can be used as port. Bulkheads in hold 2 in 2 locations, in hold 3 in 1 location  
Hold/Hatch inner dimensions : Hold 1 20.30m x 7.0m F / 10.8m A  
Hold 2 39.20 x 17.90 m  
Hold 3 25.90 x 17.90 m  
Tank top strength : 18.0 t/m<sup>2</sup> homogeneous  
Tween deck : 3.5 t/m<sup>2</sup> homogeneous  
Hatch covers : 3.5 t/m<sup>2</sup> homogeneous  
Hatch covers weathertight hydraulic folding type, combined with lift-away pontoons  
Mech exh. Vent. : Hold 1 + 3 6 times, hold 2 10 times

### Cargo Gear

Cargo cranes : 2 sets, electro-hydraulic  
Capacity : 80 / 60 / 45 / 40t - combined 144t with team beam  
Outreach : 20-33 m on port side  
Hoisting speed : 8 / 16 / 32 m/min  
Slewing / luffing : 0.7 r/min / 100 sec  
Cargo cranes : 1 set, elektro-hydraulic  
Capacity : 45 / 40 t  
Outreach : 28-33 m  
Hoisting speed : 19 / 34 m/min  
Slewing / luffing : 0.7 r/min / 90 sec

### Trading Range

World-wide incl. Panama Canal / Suez Canal / Great Lakes

### Accommodation

Air-conditioned cap. For 19 persons in single cabins, galley, 2 x messroom, office, laundry and stores

### Nautical & communication equipment

Radio equipment according to GMDSS for area A3 and add. 1 Inmarsat F terminal; two radars, echosounder, autopilot, magnetic compass, gyro compass, GPS receivers, AIS, VDR, ISPS alert system

### Owners

Single ship companies



### Commercial Manager

Enzian Ship Management AG

